



# DIESEL EXHAUST FLUID DISPENSER FILTER

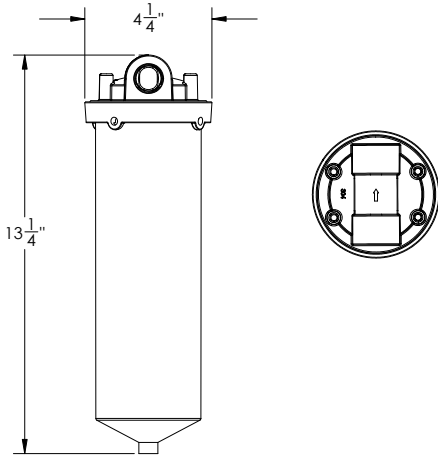
Cim-Tek® Filtration understands that diesel exhaust fluid (DEF) is a key ingredient for allowing the selective catalytic reduction (SCR) system to reduce emission pollutants such as NOx (nitrogen oxides). In response to the new 2010 truck regulations for SCR systems, we have developed D.E.F.-TEK® filters for particulate and crystal removal from DEF fluid at the dispenser to ensure SCR systems function properly.

**NEW  
DESIGN**

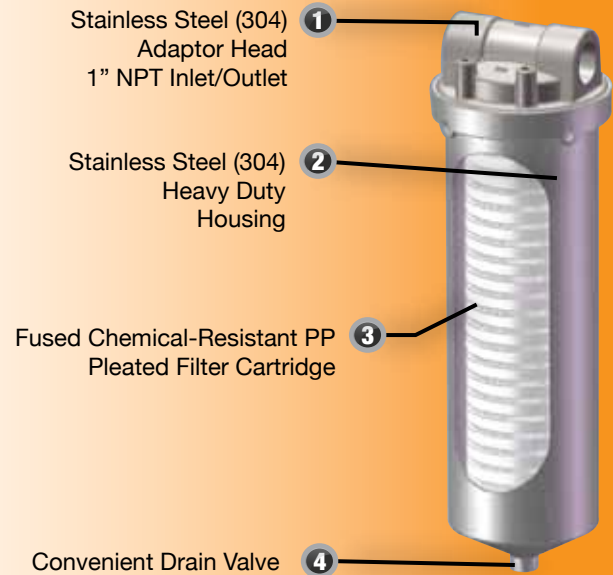


- **FILTER REMOVES PARTICULATES & CRYSTALIZED UREA FROM DEF FLUID** (Available in 1 and 5 micron filtration)
- **ULTRA-CLEAN DEF FLUID IS CRITICAL IN MAKING THE SCR SYSTEM AND DOSING VALVE FUNCTION PROPERLY**
- **FILTER HOUSINGS MANUFACTURED OF HEAVY DUTY 304 STAINLESS STEEL**
- **NEW HIGHER 150 PSI OPERATING PRESSURE**
- **ALL MATERIALS COMPATIBLE WITH DEF**





STAINLESS STEEL  
 FILTER HOUSING



CUT AWAY VIEW

**Diesel Exhaust Fluid Compatible Filter Housing - 1 per carton**

Part #	Description
41060*	Specially Designed Stainless Steel Filter Housing with EPDM gaskets, Max Operating Pressure 150 PSI (10.3 Bar), (1" NPT Inlet/Outlet)

**Diesel Exhaust Fluid Filter Cartridges for above D.E.F. Housing - 4 per carton**

Part #	Description
31011*	Fused Chemical-Resistant PP Pleated Filter Cartridge, EPDM gaskets, 1 micron
31015*	Fused Chemical-Resistant PP Pleated Filter Cartridge, EPDM gaskets, 5 micron

Note: D.E.F-TEK® filters and cartridges are not for use with aviation fuels. \*Housing and cartridges not for use with petroleum products (gasoline, diesel, etc.)